

Cylinder built-in
high-speed power chuck

HRS08

Sufficient high-speed supports for
M200Xd1/M300Xd1 turning spindle

Built-in lock valves

ensure holding workpiece in case of hydraulic
power fail

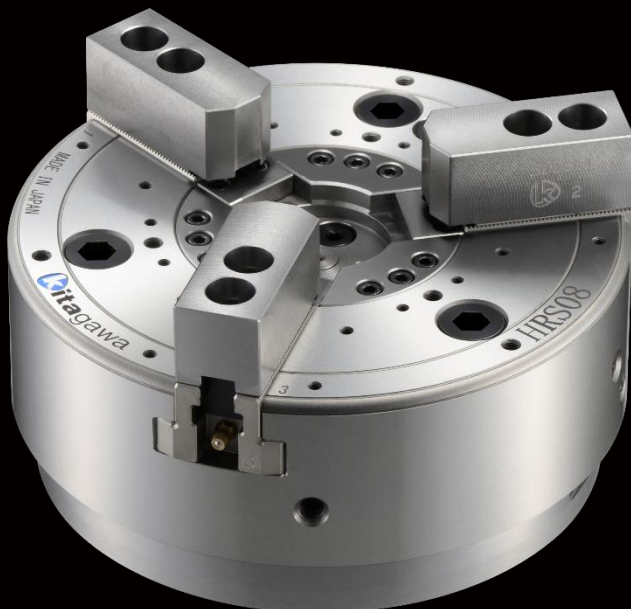
High gripping accuracy of 0.01mmT.I.R.
boosts manufacturing capability and is ideal
for mass production

Thin body provides wide machining area

Optional Tnut-Plus can be used

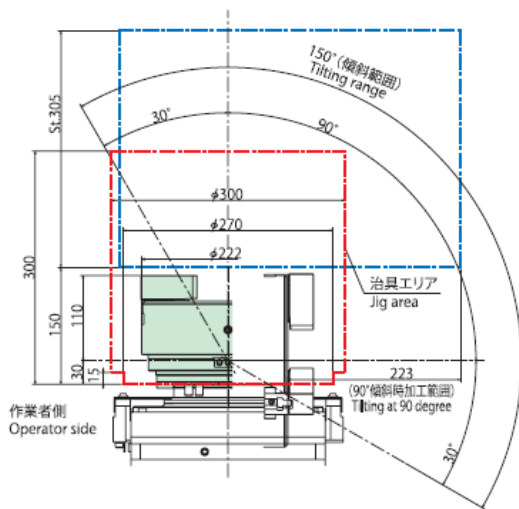
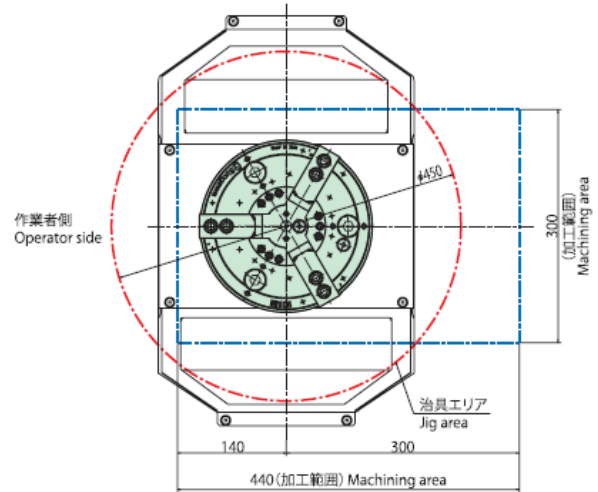
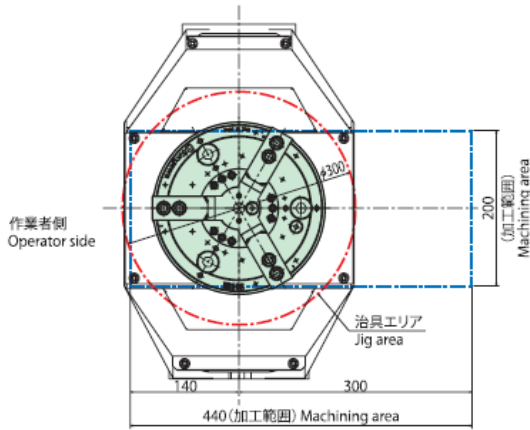
Significant reduction in setup time by
eliminating the re-forming after detaching
and attaching jaws

SPEEDIO M200Xd1 M300Xd1

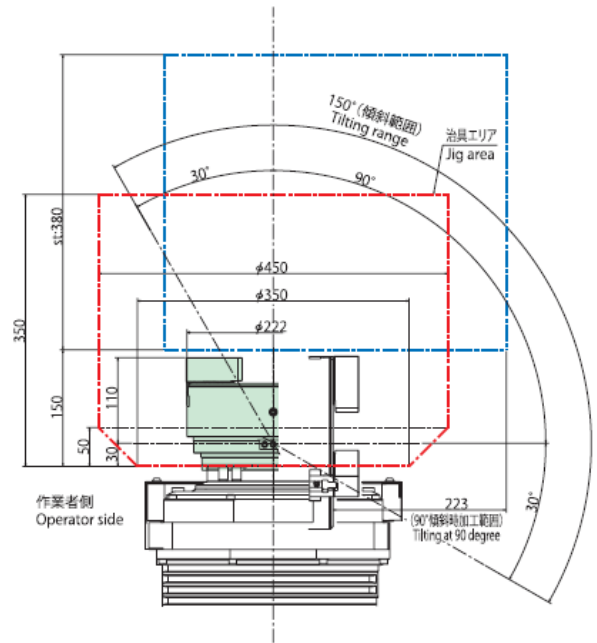


PAT. Pending
CE non-compliant

Installation drawings



M200Xd1



M300Xd1

* For detailed dimensions of HRS08, please refer to the dedicated flyer or website;
<https://www.kitagawa.com/en/mtools/csd/hrs08.html>



HRS08 specifications

Model	Gripping range		Jaw stroke (in dia.)	Max. speed	Max. gripping force	Gripping force at Max. speed	Mass	Moment of inertia	Max. hyd. Pressure	Standard soft jaw
	Max.	Min.								
	mm									
HRS08	222	45	5.5	3000	38.3	23.4	28.8	0.18	5.0	SJ06B1

For technical information on Kitagawa products, visit the Kitagawa Web Showroom.
<https://prod.kiw.co.jp/exhibition/mtools/en>



<https://www.kiw.co.jp> <https://www.kitagawa.com> <https://www.kitagawa.com.cn>

Kitagawa Corporation Kitagawa Global hand Company

77-1 Motomachi, Fuchu-shi, Hiroshima-pref. 726-8610, Japan Tel. +81 847-40-0561 Fax. +81 847-45-8911

- Specifications and outside appearance are subject to change without notice due to ongoing research and development.
- The color of the actual product may be different from the catalogue's due to printing matters.
- Catalogue contents as of 2023.9
- The products herein are controlled under Japanese Foreign Exchange and Foreign Trade Control Act. In the event of importing and/or exporting the products, You are obliged to consult KITAGAWA as well as your government for the related regulation prior to any transaction.